

ONE dental units meet all the requirements of the market and are available with hanging tube instruments or whip-arm hose instruments. Proven effectiveness for over 10 years, materials used are robusts :

- Backrest, armrest and structure in aluminium
- Pneumatic technology simple and effective
- Easy-clean polycarbonate keyboard

PE9 One suits all dentists' working positions.
Its various features make it a universal unit :

- Ambidextrous position switched over right to left in only few seconds
- Large backrest and orientable headrest
- Cuspidor and suction support fixed in ambidextrous position

PE9
ONE

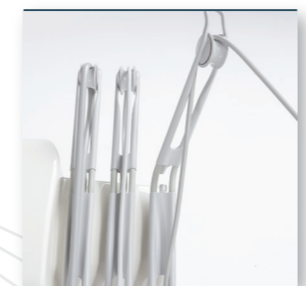


K2 One has been designed for adapt to small spaces while guaranteeing optimal ergonomics.

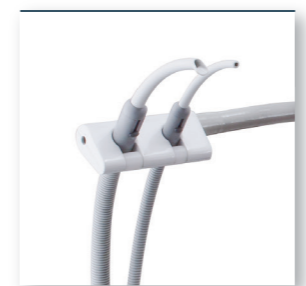
Proven structure approved for more than 15 years,

- Vertical movement of the chair, from very high to very low position
- Reduced and compact instrument tablets
- Very thin backrest

K2
ONE



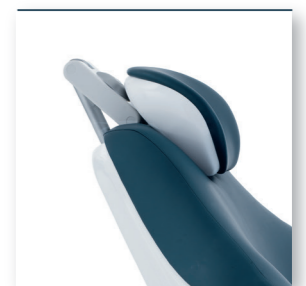
Lateral flexibility and large lateral motion



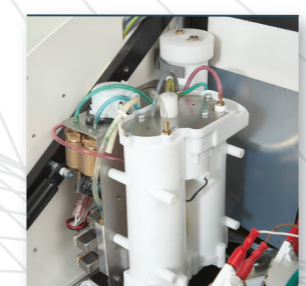
Handy and flexible suction support



Removable glass bowl and rotating cuspidor



Double rotation headrest *Option : triple articulation and pneumatic headrest



*Option : IGN, dental unit water decontamination



*Option : Progressive foot control for all the functions of the chair



*Option : Screen support and video screen



*Option on PE8 : suction support with polycarbonate keypad

MADE IN FRANCE

Medical device : Class IIa - Notified body : SZUTEST (2195)
Manufacturer: Airel, France | January 2023.